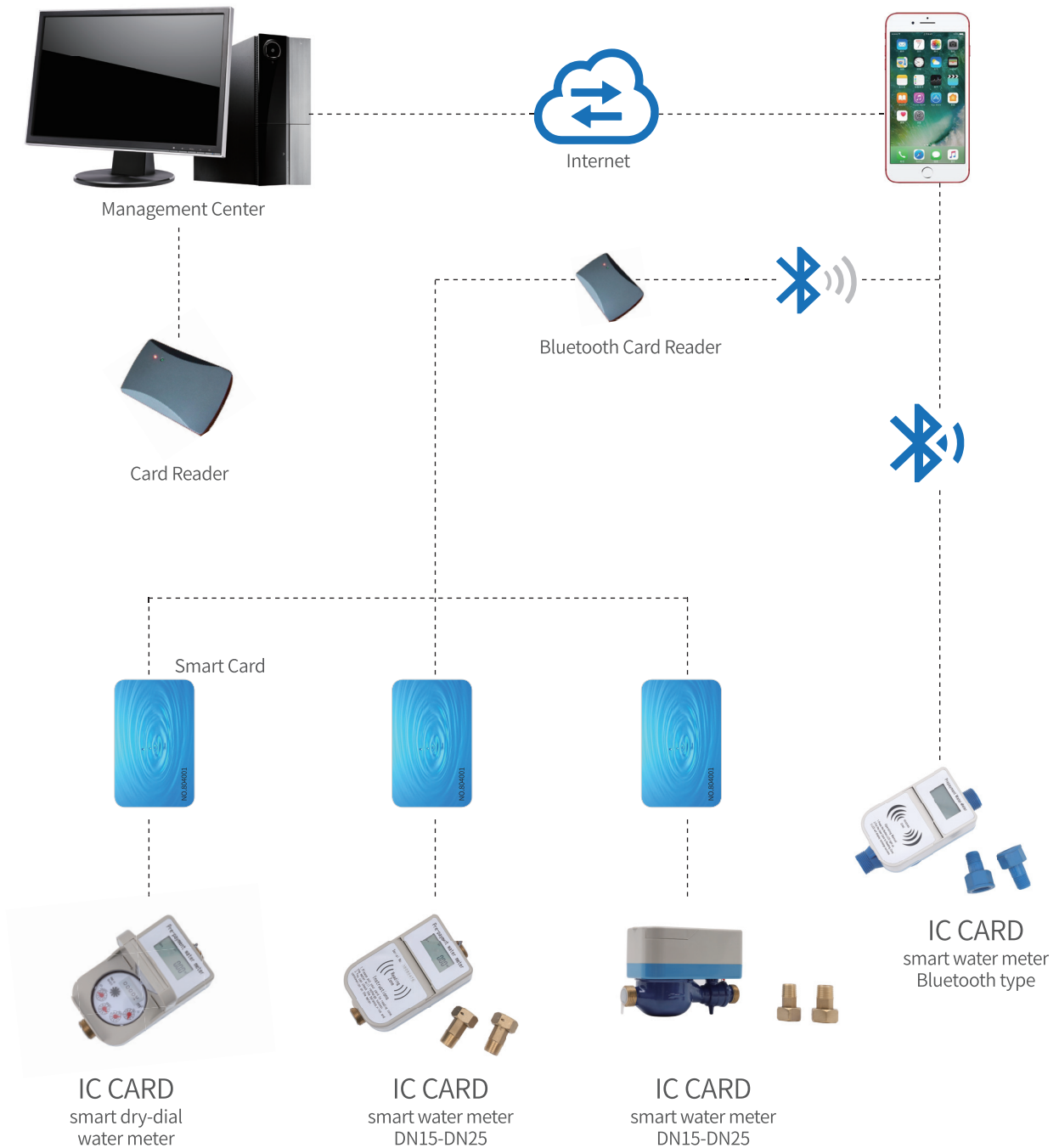


Functional Advantage

Long working life with more higher accuracy



IC Card-(15-25) Prepaid Water Meter

IC Card-(15-25)

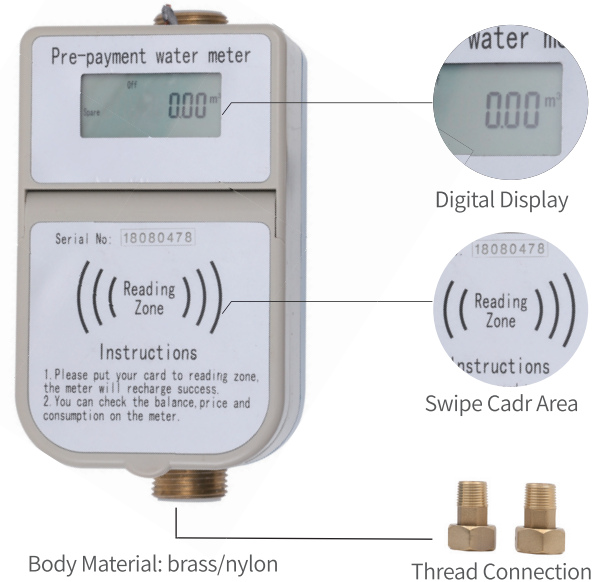
Prepaid Water Meter ▼

Application

IC card water meter is the new measuring instrument employing the microprocessor to realize water collection, processing, display, and reserving. It is the best choice for realizing intelligent control by most of tap water administrative bureaus, ideal for enhancing public awareness of saving water. Compared with traditional way, it can control user's overspend by prepaying for an IC card.

Feature

- IC card water meter use pre-paid way to achieve the new management mode of "purchase first, then use"
- Double reading display: mechanical and electronic reading, the unique battery protection
- Stable performance, wide application
- Low power consumption, long life time.
- Universal use
- Electronic part is vacuum sealed
- Anti-jamming and resist exterior magnet interference



HYDRAULIC PERFORMANCE				
Size	mm	15	20	25
	inches	1/2"	3/4"	1"
Metrological class		R80/R100		
Q4	m³/h	3	5	7.9
Q3	m³/h	2.5	4	6.3
Q2	m³/h	0.05	0.08	0.126
Q1	m³/h	0.031	0.05	0.079
TECHNICAL SPECIFICATIONS				
Maximum permissible error Between Q1 and Q2(excluded)		±5%		
Maximum permissible error Between Q2(included) and Q4		±2% with water temperature ≤ 30°C ±3% with water temperature > 30°C		
Temperature class		Cold water: 0°C ~ 40°C Hot water: 40°C ~ 90°C		
Pressure loss class		△ p63		
Nominal pressure	V	3.0V~3.6V		
Min reading	m³	0.0005	0.0005	0.0005
Max reading	m³	99,999	99,999	99,999
DIMENSIONS				
L	mm	165	195	225
L1	mm	259	299	345
W	mm	86	86	86
H	mm	117	117	117
CONNECTING THERAD				
		G3/4"B	G1"B	G1 1/4"B
ELECTRICAL TECHNICAL				
Working current		< 20mA		
Low voltage protectio		2.8V		
Quiescent cueernt		< 15uA		
Battery voltage		3.6V		
Water volume per pulse singal		100L		